

DRAINS

Cockpit Deck Drains in Stainless Steel

- 316 Stainless steel construction
- Available both with thread and barb pipes
- Flush profile allows for a complete water drainage



Stalon Cockpit Drain

- Nylon body and 316 stainless steel face plate provides a stainless appearance
- Flush profile
- Compact design with minimal internal protrusion
- Available in two deck head designs and as mini version



Scuppers

- Available in 316 stainless steel or stalon construction
- Available with barb or thread pipes
- Features either a check valve or a check ball to prevent water entry and enable a one way water flow



Shower Drains

- 316 stainless steel construction
- Small drain holes prevent hair and dirt from entering the drain
- Designed to be comfortable to step on



Drain Plugs

- Available in brass, 316 stainless steel or stainless/plastic combination
- Captured plug can be opened and closed by hand
- Available in two sizes
- Available in two design, as captured drain plug or flip lock handle drain plug



Hooded Compartment Drain

- 316 Stainless steel cap with nylon threaded tube
- Easy installation
- Heavy duty cast construction



Drain Accessories

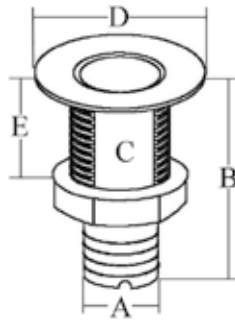
- Barb adapters
- Cockpit drain system



DRAINS

COCKPIT FLUSH DRAIN WITH BARB FITTING

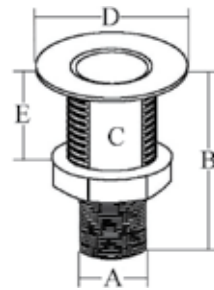
- 316 stainless steel
- Drain with tapered lower face allows for a flush mount which provides a complete water drainage
- Light-weight design
- Innovative cast thread design minimizes rust potential



| Part No | A mm | B mm | C mm | D mm | E mm |
|---------------|-------------|---------------|-------------|--------------|-------------|
| M7-16-9503341 | 19 (3/4") | 71 (2 13/16") | 32 (1 1/4") | 56 (2 1/4") | 25 (1") |
| M7-16-9503343 | 25 (1") | 75 (3") | 41 (1 5/8") | 65 (2 9/16") | 25 (1") |
| M7-16-9503345 | 32 (1 1/4") | 85 (3 3/8") | 56 (2 1/4") | 81 (3 3/16") | 28 (1 1/8") |
| M7-16-9503347 | 38 (1 1/2") | 85 (3 3/8") | 56 (2 1/4") | 81 (3 3/16") | 28 (1 1/8") |

COCKPIT FLUSH DRAIN WITH PIPE FITTING

- 316 stainless steel
- Drain with tapered lower face allows for a flush mount which provides a complete water drainage

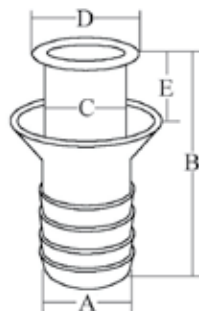


| Part No | A | B mm | C mm | D mm | E mm |
|---------------|-------------|---------------|-------------|--------------|-------------|
| M7-16-9503351 | 19 (3/4") | 62 (2 1/2") | 32 (1 1/4") | 56 (2 1/4") | 25 (1") |
| M7-16-9503353 | 25 (1") | 71 (2 13/16") | 41 (1 5/8") | 65 (2 9/16") | 25 (1") |
| M7-16-9503355 | 32 (1 1/4") | 74 (2 7/8") | 56 (2 1/4") | 81 (3 3/16") | 28 (1 1/8") |
| M7-16-9503357 | 38 (1 1/2") | 79 (3 1/8") | 56 (2 1/4") | 81 (3 3/16") | 28 (1 1/8") |

NOTE All part numbers in the table have NPT thread. For BSB add-B to the part-numbers

MINI COMPARTMENT DRAIN

- Stamped 304 stainless steel drain tube and rubber grip barb
- Suitable for deck and hatch gutter drains

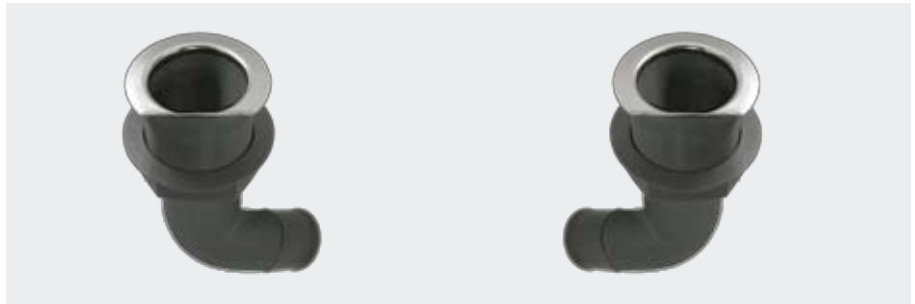
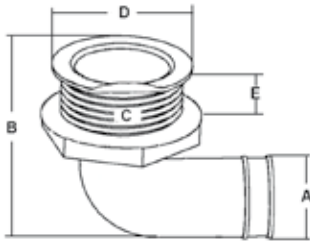


| Part No | A mm | B mm | C mm | D mm | E mm |
|---------------|-----------|-------------|-----------|-------------|----------|
| M7-16-9503701 | 16 (5/8") | 12 (1/2") | 12 (1/2") | 18 (3/4") | 9 (3/8") |
| M7-16-9503703 | 19 (3/4") | 44 (1 3/4") | 16 (5/8") | 22 (7/8") | 9 (3/8") |
| M7-16-9503705 | 25 (1") | 44 (1 3/4") | 22 (7/8") | 29 (1 1/8") | 9 (3/8") |

DRAINS

90° SIDE MOUNT COCKPIT DRAIN

- Nylon body with 316 stainless steel cap
- Designed to be mounted flush to the deck for complete drainage
- Hose barb design suitable for installation in tight spaces



| Part No | Model | A mm | B mm | C mm | D mm | E mm |
|---------------|------------|-------------|-------------|--------------|-------------|---------------|
| M7-16-9405632 | Right Barb | 38 (1 1/2") | 92 (3 5/8") | 56 (2 7/32") | 69 (2 3/4") | 34 (1 11/32") |
| M7-16-9405633 | Left Barb | 38 (1 1/2") | 92 (3 5/8") | 56 (2 7/32") | 69 (2 3/4") | 34 (1 11/32") |

90° SIDE MOUNT COCKPIT DRAIN

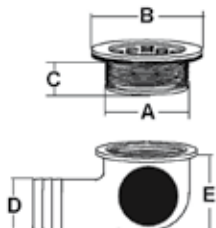
- Nylon body with 316 stainless steel cap
- Designed to be mounted flush to the deck for complete drainage
- Hose barb design suitable for installation in tight spaces



| Part No | Size | A mm | B mm | C mm | D mm | E mm |
|-----------------|------------------------------------|-------------|-------------|---------------|----------|-------------|
| M7-16-9005251 | 38 1 1/2" | 38 (1 1/2") | 44 (1 3/4") | 63.5 (2 1/2") | 102 (5") | 57 (2 1/4") |
| M7-16-9005251-1 | Temporary plug for 9005251/9005252 | | | | | |
| M7-16-9005252 | 50 (2") | 50 (2") | 44 (1 3/4") | 63.5 (2 1/2") | 102 (5") | 57 (2 1/4") |

90° DECK DRAIN SCUPPER KIT

- Nylon body with 316 stainless steel grate
- Compact design is suitable for applications with limited space
- One-way check ball design
- All parts are NPSM threaded
- Available in two drain head designs

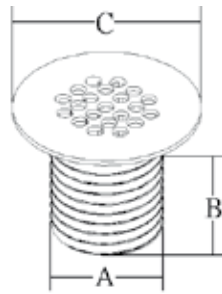


| Part No | Drain Head | A | B mm | C mm | D mm | E mm |
|-----------------|-------------------------------------|---------|-------------|--------------|-------------|-------------|
| M7-16-9405838 | A | 50 (2") | 82 (3 1/4") | 27 (1 1/16") | 38 (1 1/2") | 58 (2 1/4") |
| M7-16-9405840 | A | 50 (2") | 82 (3 1/4") | 27 (1 1/16") | 50 (2") | 72 (2 7/8") |
| M7-16-9405842 | B | 50 (2") | 75 (3") | 27 (1 1/16") | 38 (1 1/2") | 58 (2 1/4") |
| M7-16-9405844 | B | 50 (2") | 75 (3") | 27 (1 1/16") | 50 (2") | 72 (2 7/8") |
| M7-17-101 | Replacement ball | | | | | |
| M7-17-9405830-1 | Nylon 90° adapter w/ 38 (1.5") barb | | | | | |
| M7-17-9405830-2 | Nylon 90° adapter w/ 50 (2") barb | | | | | |
| M7-17-8731437-B | Black key | | | | | |

DRAINS

DRAIN SHOWER FITTING WITH PIPE THREAD

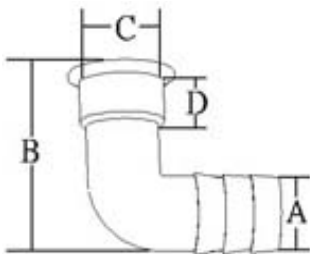
- 316 stainless steel
- Fits 90° stainless steel adapters and stainless steel pipe thread adapters
- Designed to be used as sink, shower or deck drains



| Part No | A mm | B mm | C mm | S.S. Nut |
|-----------------|-------------|-------------|-------------|----------|
| M7-16-9005301-1 | 31 (1 1/4") | 15 (5/8") | 42 (1 5/8") | No |
| M7-16-9105526 | 31 (1 1/4") | 50 (2") | 42 (1 5/8") | Yes |
| M7-16-9005305-1 | 44 (1 3/4") | 18 (11/16") | 70 (2 3/4") | No |
| M7-16-9105512 | 44 (1 3/4") | 50 (2") | 70 (2 3/4") | Yes |

90° BARB ADAPTER STAINLESS STEEL

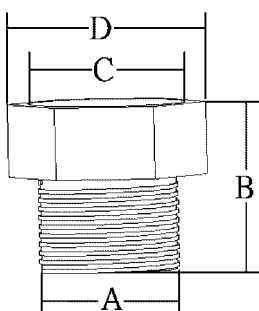
- 316 stainless steel
- Fits stainless steel all-thread thru hull fittings & drain grates



| Part No | Model | Size | A | B | C | D | Case Qty |
|---------------|--------------|--------|--------|---------|--------|--------|----------|
| M7-11-9005224 | Fits Model 1 | 5/8" | 5/8" | 1-3/4" | 1-1/8" | 9/16" | 50 |
| M7-11-9005225 | Fits Model 1 | 3/4" | 3/4" | 1-7/8" | 1-1/4" | 5/8" | 50 |
| M7-11-9005226 | Fits Model 1 | 1" | 1" | 2-1/8" | 1-1/4" | 5/8" | 50 |
| M7-11-9005227 | Fits Model 1 | 1-1/8" | 1/1/8" | 2-7/16" | 1-1/8" | 3/4" | 50 |
| M7-11-9005228 | Fits Model 2 | 1-1/4" | 1-1/4" | 3-1/16" | 1-3/4" | 11/16" | 25 |
| M7-11-9005229 | Fits Model 2 | 1-1/2" | 1/1/2" | 3-1/16" | 1-3/4" | 11/16" | 25 |

PIPE THREAD ADAPTER

- 316 Stainless Steel
- Fits our all-thread thru hull fittings (NPT)
- This adapter needed to adapt drains & thru hulls to SAE pipe thread hoses

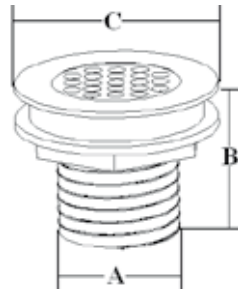


| Part No | A mm | B mm | C mm | D mm |
|---------------|-----------------|-------------|---------------|--------------|
| M7-07-9005233 | 26 (3/4" NPT) | 33 (1 1/4") | 30 (1 3/16") | 37 (1 7/16") |
| M7-07-9005234 | 32 (1" NPT) | 35 (1 3/8") | 30 (1 3/16") | 38 (1 7/16") |
| M7-07-9005238 | 48 (1 1/2" NPT) | 48 (1 7/8") | 43 (1 11/16") | 54 (2 1/8") |

DRAINS

SHOWER DRAIN WITH PIPE THREAD

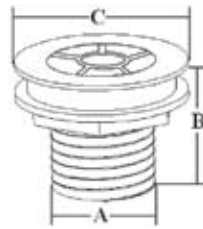
- 316 stainless steel
- Suitable as drains for sinks, showers or decks
- BSP, NPT or NPSM thread upon request



| Part No | A | B mm | C mm | Gasket | Nut |
|---------------|-------------|--------------|-------------|--------|-----|
| M7-16-9205270 | 25 (1") | 50 (2") | 45 (1 3/4") | 5 mm | Yes |
| M7-16-9205274 | 38 (1 1/2") | 50 (2") | 75 (3") | 8 mm | Yes |
| M7-16-9205276 | 38 (1 1/2") | 27 (1 1/16") | 75 (3") | 3 mm | Yes |
| M7-16-9205277 | 50 (2") | 27 (1 1/16") | 84 (3 1/4") | 3 mm | No |

SHOWER DECK DRAIN WITH NYLON ADAPTER

- 316 Stainless Steel
- Drain grate designed to maximize water flow. BSP, NPT or NPSM thread upon request.



| Part No | A | B mm | C mm | Gasket | Nut |
|---------------|-------------|--------------|---------------|--------|-----|
| M7-16-9305351 | 38 (1 1/2") | 52 (2") | 75 (2 15/16") | 8 mm | Yes |
| M7-16-9305352 | 38 (1 1/2") | 27 (1 1/16") | 75 (2 15/16") | 3 mm | Yes |
| M7-16-9305353 | 50 (2") | 27 (1 1/16") | 75 (2 15/16") | 3 mm | No |

PLASTIC ADAPTERS

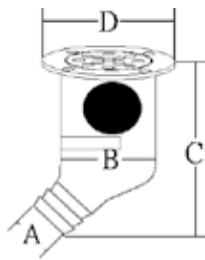


| Part No | |
|-----------------|-----------------------------------|
| M7-16-9503381 | 3/4" Shower drain |
| M7-16-9603411 | 1 1/4" Deck drain |
| M7-16-9503385 | 3/4" Deck drain |
| M7-16-9503386 | 1" Deck drain |
| M7-169503387 | 1 1/2" Deck drain |
| M7-169503388 | 2" Deck drain |
| M7-07-9305352-P | Plastic 90° adapter W/1 1/2" barb |
| M7-07-9305353-P | Plastic 90° adapter W/2" barb |

DRAINS

DECK SHOWER DRAIN SCUPPERS

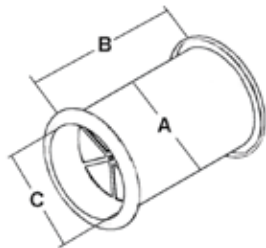
- 316 stainless steel
- Polished cover
- Cover can be removed for cleaning
- Incorporates one-way check ball design
- Drain grate key included



| Part No | Model | A mm | B mm | C mm | D mm |
|---------------|------------------|-------------|-------------|--------------|--------------|
| M7-11-8731436 | 45° | 38 (1 1/2") | 58 (2 1/4") | 115 (4 1/2") | 91 (3 5/8") |
| M7-11-9405182 | 95° | 38 (1 1/2") | 57 (2 1/4") | 79 (3 1/8") | 91 (3 5/8") |
| M7-11-9405186 | 95° | 50 (2") | 73 (2 7/8") | 104 (4 1/8") | 108 (4 1/4") |
| M7-89-8931437 | Key | | | | |
| M7-17-101 | Replacement ball | | | | |

COCKPIT DRAIN SYSTEM

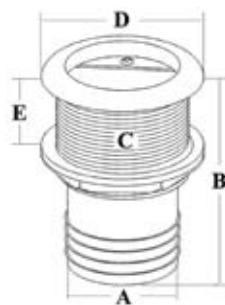
- 316 stainless steel
- Comes with a removable one-way flow diaphragm
- Tube can be cut to desired length



| Part No | A mm | B mm | C mm | W/plug |
|-----------------|---------------------------------|---------------|-------------|--------|
| M7-16-9305358 | 76 (3") | 102 (4 5/32") | 70 (2 3/4") | 50 1" |
| M7-16-9105655 | 2" Scupper cockpit drain w/plug | | | |
| M7-15-8933079 | 1.5" Scupper system | | | |
| M7-17-9015655-D | 2" Diaphragm | | | |
| M7-17-8931489-C | 2" Plug | | | |
| M7-16-9305358-1 | 3" Diaphragm | | | |

SCUPPER WITH BARB FITTING

- 316 stainless steel
- Straight angle design
- Features a flexible one-way PVC check valve
- Prevents water from entering the boat

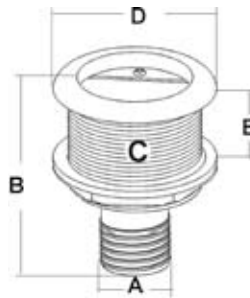


| Part No | A mm | B mm | C mm | D mm | E mm |
|-----------------|------------------|---------------|--------------|-------------|--------------|
| M7-13-9205380 | 51 (2") | 96 (3 3/4") | 53 (2 1/16") | 65 (2 1/2") | 29 (1 5/32") |
| M7-13-9005309 | 38 (1 1/2") | 110 (4 3/8") | 53 (2 1/16") | 65 (2 1/2") | 42 (1 5/8") |
| M7-13-9005310 | 38 (1 1/2") | 148 (5 7/8") | 53 (2 1/16") | 65 (2 1/2") | 81 (3 3/16") |
| M7-13-9105516 | 50 (2") | 154 (6 1/16") | 53 (2 1/16") | 65 (2 1/2") | 81 (3 3/16") |
| M7-17-9005309-1 | Check Valve Only | | | | |

DRAINS

SCUPPER WITH PIPE FITTING

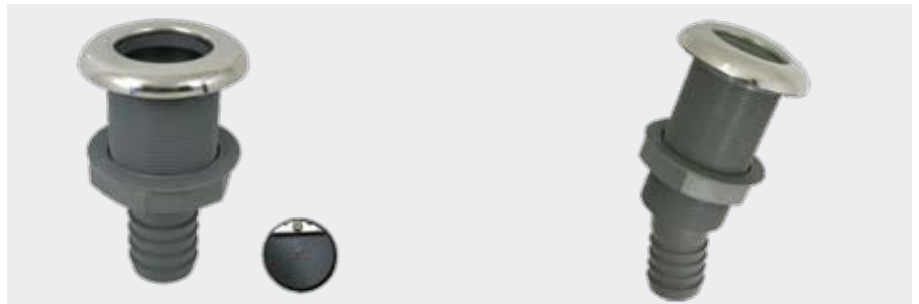
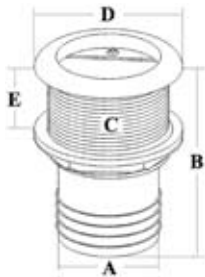
- 316 stainless steel
- Straight angle design
- Features a flexible one-way PVC check valve
- Prevents water from entering the boat



| Part No | A mm | B mm | C mm | D mm | E mm |
|---------------|-------------|--------------|--------------|-------------|---------------|
| M7-14-9105750 | 25 (1") | 80 (3 5/32") | 53 (2 1/16") | 65 (2 1/2") | 46 (1 3/4") |
| M7-14-9105752 | 25 (1") | 118 (4 5/8") | 53 (2 1/16") | 65 (2 1/2") | 84 (3 3/8") |
| M7-14-9405482 | 38 (1 1/2") | 79 (3 1/8") | 53 (2 1/16") | 65 (2 1/2") | 29 (1 1/8") |
| M7-14-9105754 | 38 (1 1/2") | 131 (5 1/8") | 53 (2 1/16") | 65 (2 1/2") | 79.5 (3 1/8") |

STALON SCUPPER

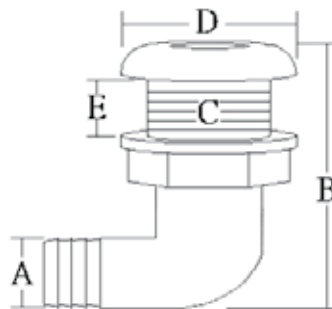
- Nylon body with 316 stainless steel cap
- Light-weight design with a stainless steel appearance
- Tested to ASTM D638 and ASTM D790
- Features a one-way PVC check valve



| Part No | Model | A mm | B mm | C mm | D mm | E mm |
|-----------------|--------------------------|-------------|--------------|-------------|-------------|-------------|
| M7-10-9005253 | 0° | 38 (1 1/2") | 133 (5 1/4") | 56 (2 1/4") | 82 (3 1/4") | 44 (1 3/4") |
| M7-10-9005254 | 0° | 52 (2") | 133 (5 1/4") | 56 (2 1/4") | 82 (3 1/4") | 44 (1 3/4") |
| M7-10-9105541 | 10° | 38 (1 1/2") | 95 (3 3/4") | 56 (2 1/4") | 82 (3 1/4") | 38 (1 1/2") |
| M7-10-9005261 | 15° | 38 (1 1/2") | 178 (7") | 56 (2 1/4") | 82 (3 1/4") | 100 (4") |
| M7-17-9005253-2 | Check Valve Only/Flapper | | | | | |

90° STALON SCUPPER

- Nylon body with 316 stainless steel cap
- 90° angle design
- Prevents water from entering the boat

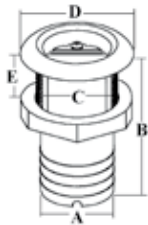


| Part No | A mm | B mm | C mm | D mm | E mm |
|---------------|-------------|--------------|-------------|-------------|-------------|
| M7-10-9305460 | 38 (1 1/2") | 120 (4 3/4") | 56 (2 1/4") | 82 (3 1/4") | 21 (13/16") |

DRAINS

NYSTEEL SCUPPER

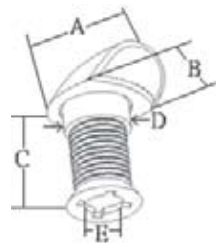
- 316 stainless steel body with nylon nut
- Light-weight design
- Features a one-way PVC check valve



| Part No | A mm | B mm | C mm | D mm | E mm |
|-----------------|--|---------------|-------------|---------|-------------|
| M7-12-9503430 | 38 (1 1/2") | 97 (3 13/16") | 56 (2 1/4") | 78 (3") | 34 (1 3/8") |
| M7-12-9503431 | 51 (2") | 110 (4 3/8") | 56 (2 1/4") | 78 (3") | 34 (1 3/8") |
| M7-12-9503433 | 38 (1 1/2") | 141 (5 1/2") | 56 (2 1/4") | 78 (3") | 79 (3 1/8") |
| M7-17-9503430 1 | 6mm thickness gasket for #9503430/1/3 (optional) | | | | |

HOODED COMPARTMENT DRAIN

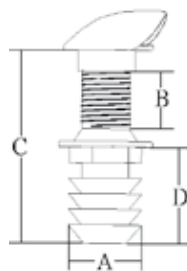
- Nylon body with 316 stainless steel hood
- Suitable for drainage for above waterline compartments
- Available with or without drain plug



| Part No | Model | A mm | B mm | C mm | D mm | E mm |
|-----------------|-----------------|-------------|-------------|-------------|---------|-------------|
| M7-16-9105660 | W/ Plug | 48 (1 7/8") | 40 (1 1/2") | 54 (2 1/8") | 25 (1") | 17 (11/16") |
| M7-16-9004267 | W/O Plug | 48 (1 7/8") | 40 (1 1/2") | 54 (2 1/8") | 25 (1") | 17 (11/16") |
| M7-16-9004267-1 | Drain Plug Only | | | | | |

HOODED COMPARTMENT WITH BARB PIPE

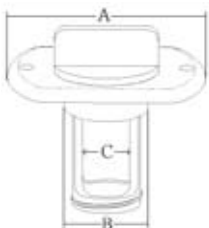
- Nylon body with 316 stainless steel hood
- Suitable for drainage for above waterline compartments



| Part No | A mm | B mm | C mm | D mm |
|---------------|-----------|--------------|-------------|--------------|
| M7-16-9105701 | 16 (5/8") | 40 (1 9/16") | 96 (3 3/4") | 40 (1 9/16") |
| M7-16-9105702 | 19 (3/4") | 42 (1 5/8") | 96 (3 3/4") | 40 (1 9/16") |

OVAL DRAIN PLUG

- Available in brass, 316 stainless steel, and stainless steel nylon retaining plug
- Retention cap can be operated by hand

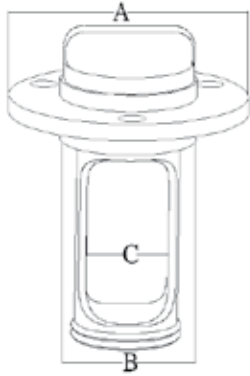


| Part No | Material | A mm | B mm | C mm |
|---------------|-------------------------|-------------|-------------|-----------|
| M7-16-9004266 | Stainless steel | 54 (2 1/8") | 25 (1") | 12 (1/2") |
| M7-16-9004269 | Stainless steel | 64 (2 1/2") | 32 (1 1/4") | 19 (3/4") |
| M7-16-9105280 | Brass | 54 (2 1/8") | 25 (1") | 12 (1/2") |
| M7-16-9105281 | Brass | 64 (2 1/2") | 32 (1 1/4") | 19 (3/4") |
| M7-16-9004255 | Stainless steel & Nylon | 39 (1 1/2") | 25 (1") | 12 (1/2") |

DRAINS

DRAIN PLUG

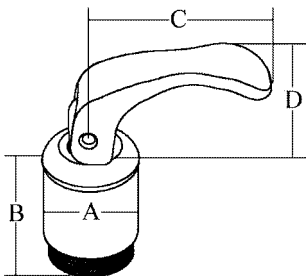
- Brass
- Retention plug can be operated by hand



| Part No | Model | A mm | B mm | C mm | Dmm |
|---------------|-----------------------|---------|-----------|-----------|-------------|
| M7-16-9305330 | Housing & Wing Plug | 50 (2") | 25 (1") | 10 (3/8") | - |
| M7-16-9305331 | Wing Plug Only | | | | |
| M7-16-8622401 | Housing & Square Plug | 50 (2") | 15 (5/8") | 25 (1") | - |
| M7-16-8722409 | Square Plug Only | | | | |
| M7-16-9503248 | Drain plug w/ext pipe | 50 (2") | 25 (1") | 15 (5/8") | 60 (2 3/8") |

HANDLE DRAIN PLUG

- 316 stainless steel with rubber
- Features a flip lock handle
- Fits 25mm (1") Stalon Thur Hull
- Handle drain plug shown with thru hull (left picture)



| Part No | A mm | B mm | C mm | D mm |
|---------------|-----------|--------------|---------------|-------------|
| M7-16-9503161 | 22 (7/8") | 33 (1 5/16") | 43 (1 11/16") | 24 (15/16") |